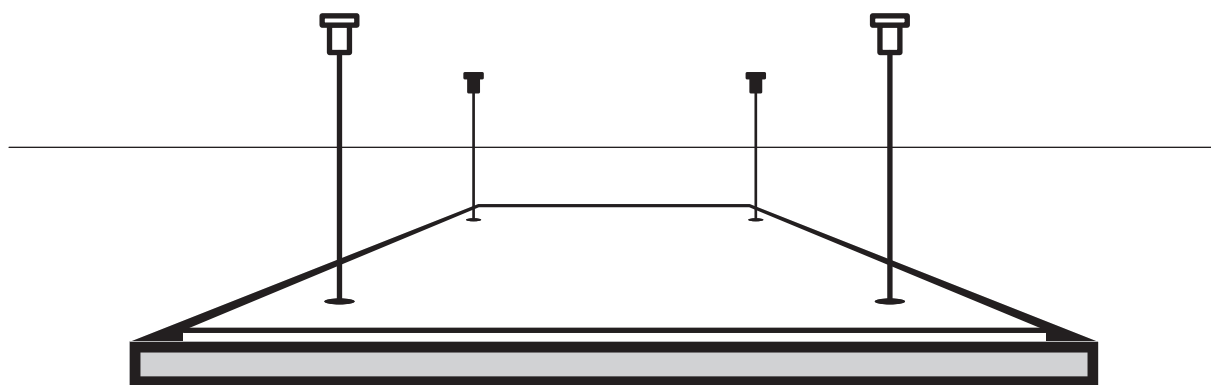


DECKENABSORBER

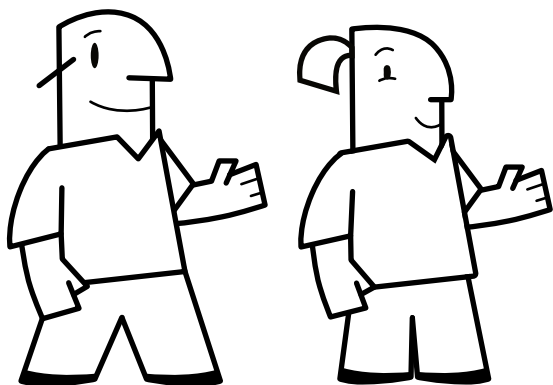
Befestigung mit Seil



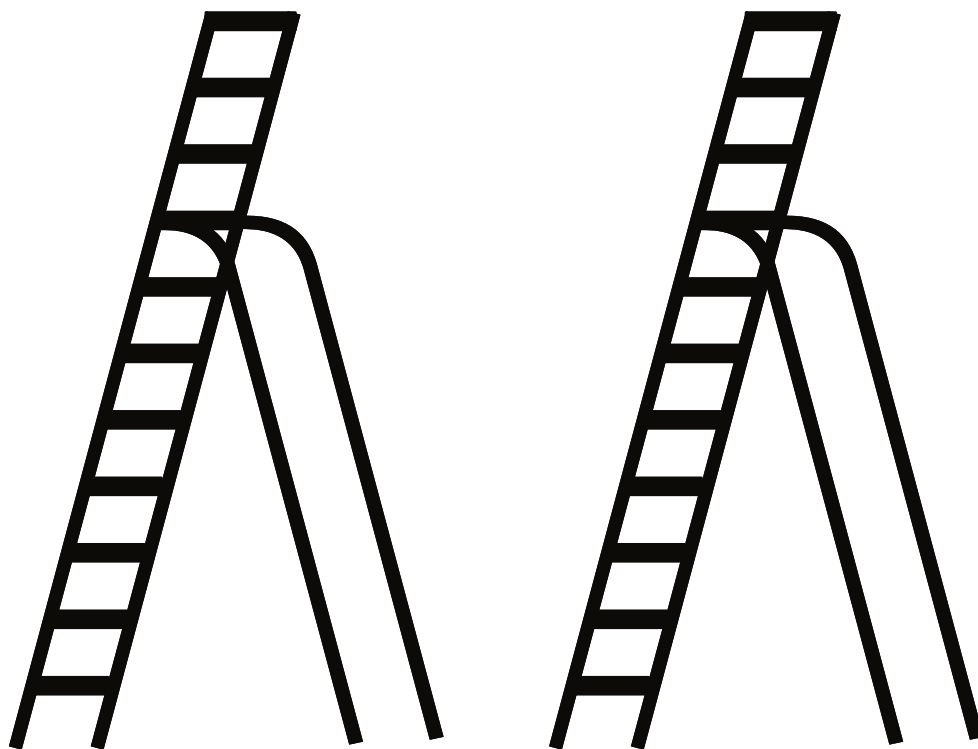
Montageanleitung



Personen



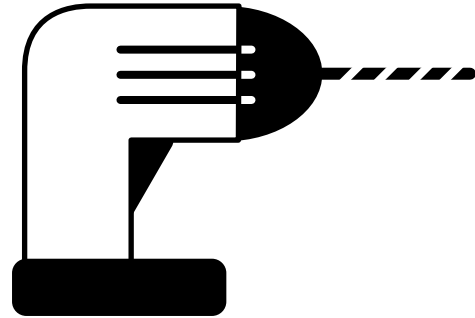
Leitern



Werkzeug (W)



.W1 - Bleistift



.W2 - Bohrer



.W3- Vermessungslaser



.W4 - Schraubendreher



.W5 - Schraubenschlüssel

Deckenabsorber (.A)

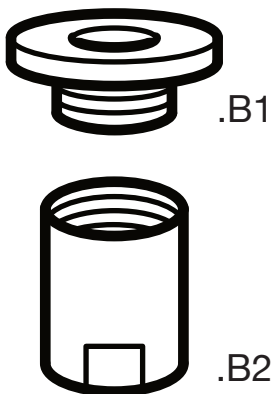
.A1 - Filzbox / Nitona® mit Aufkantung (außen)



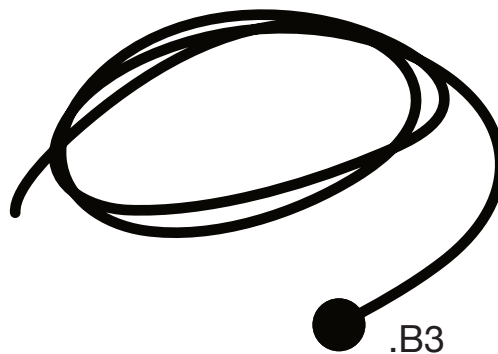
.A2 - Vlies / Bohrschablone (innen)

Befestigungen (.B)

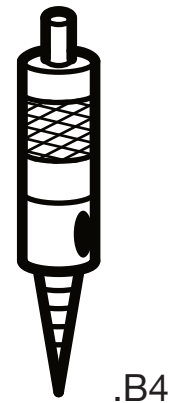
Decke



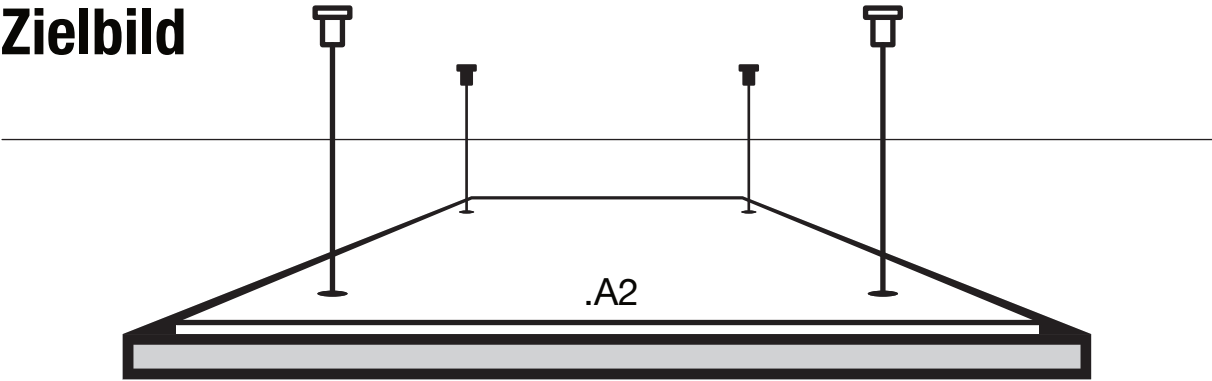
Seil



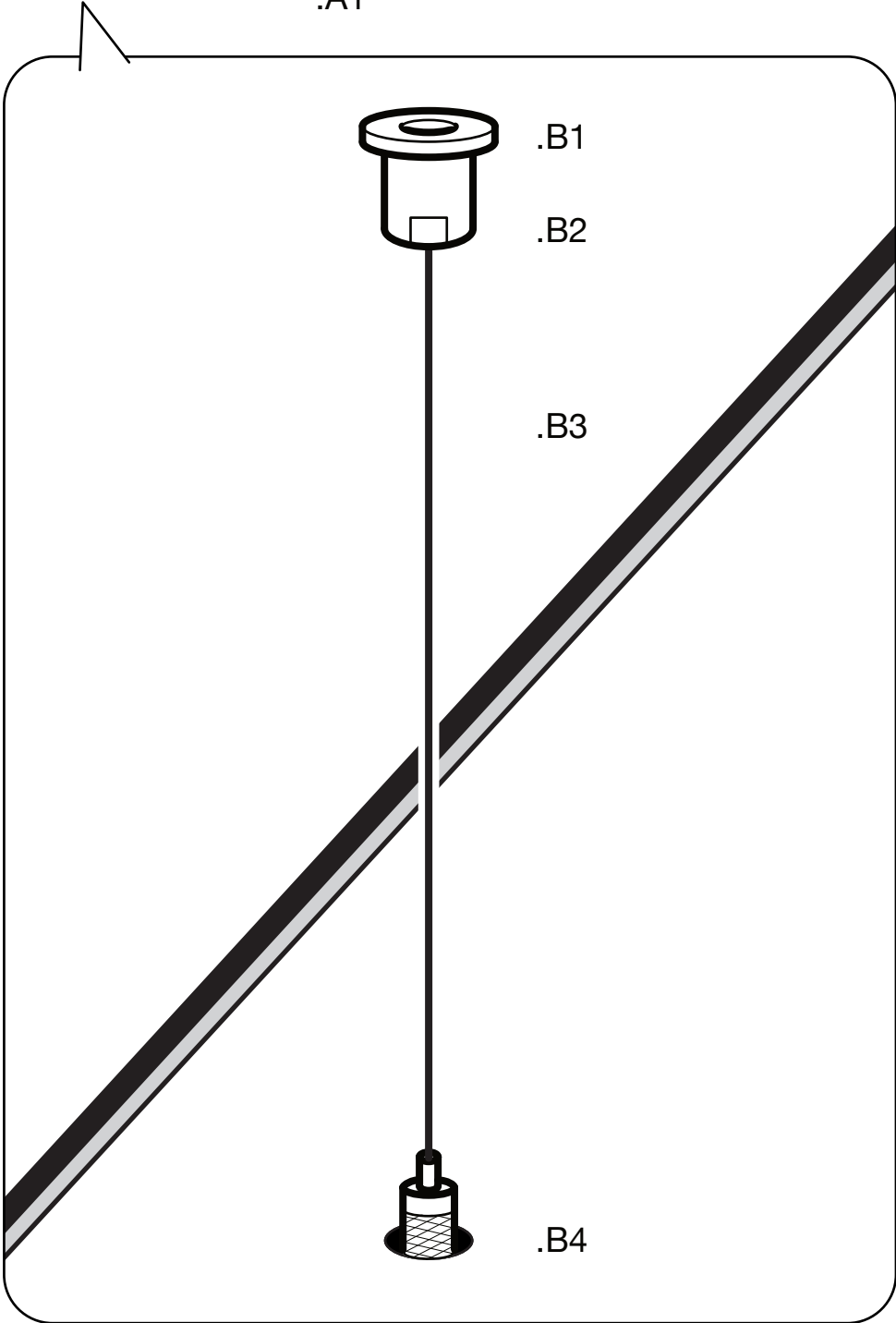
Filzbox



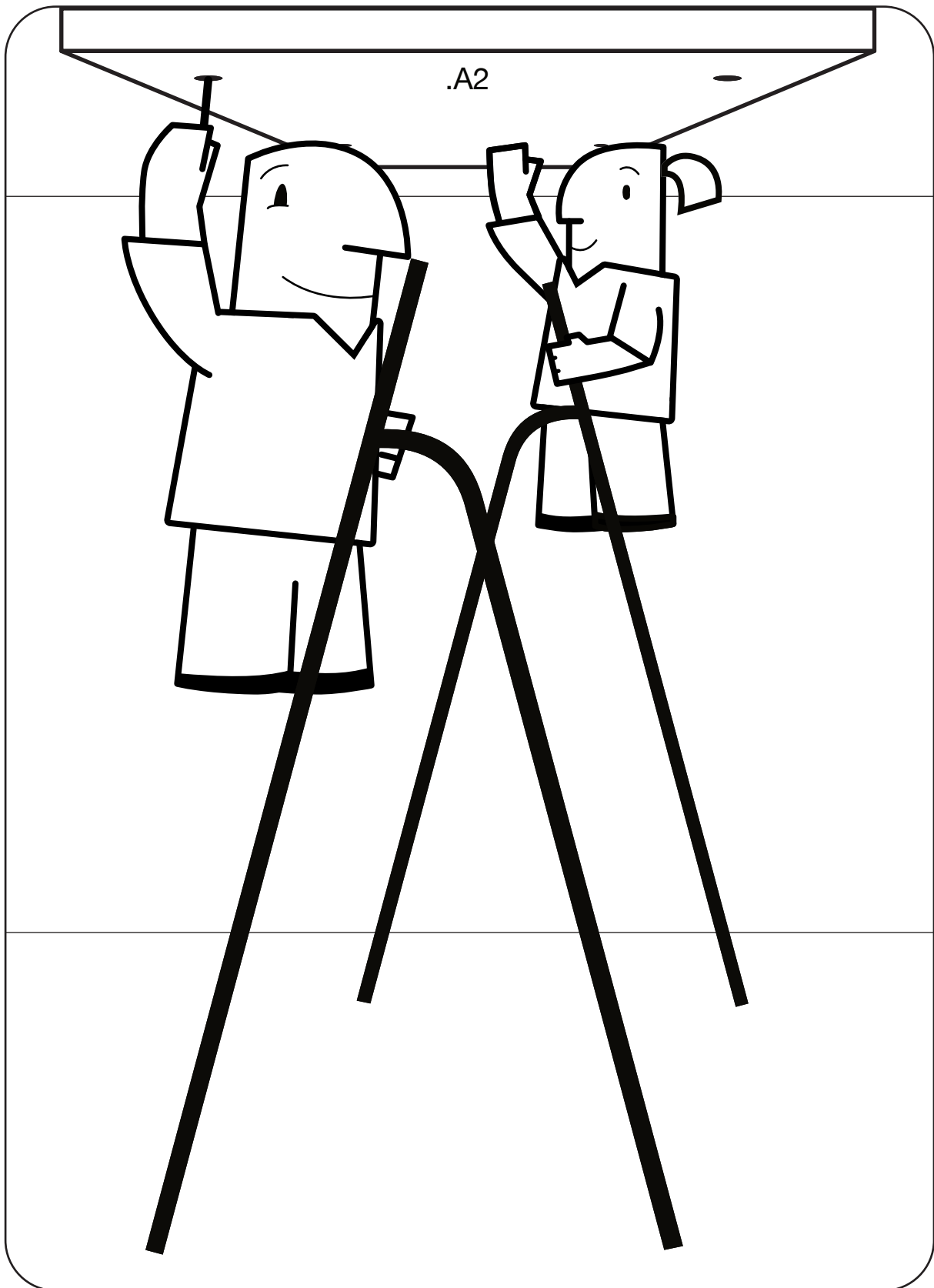
Zielbild



.A1



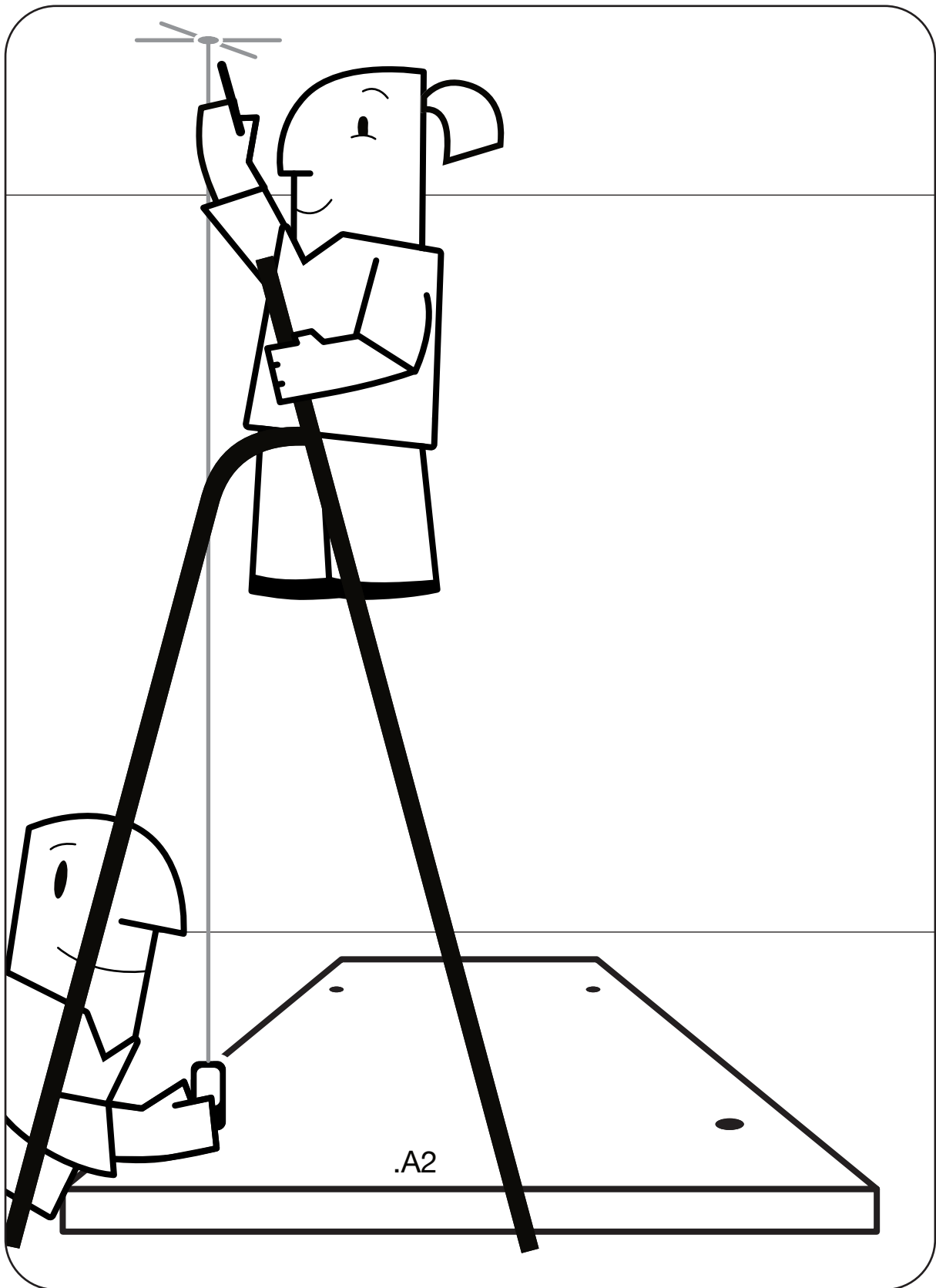
Bohrungen anzeichnen



OD

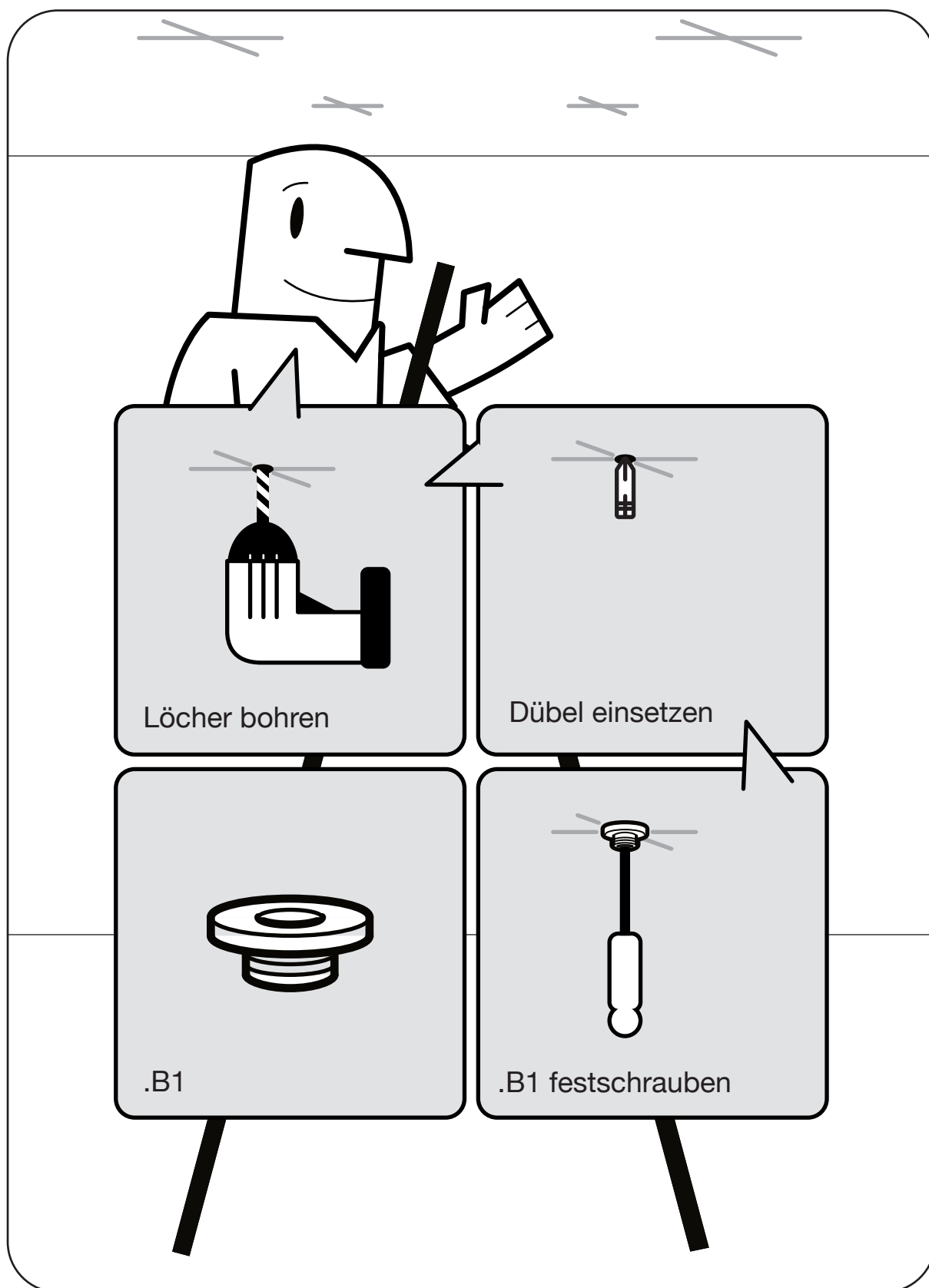
Vlies (.A2) als Bohrschablone an der Decke

ER

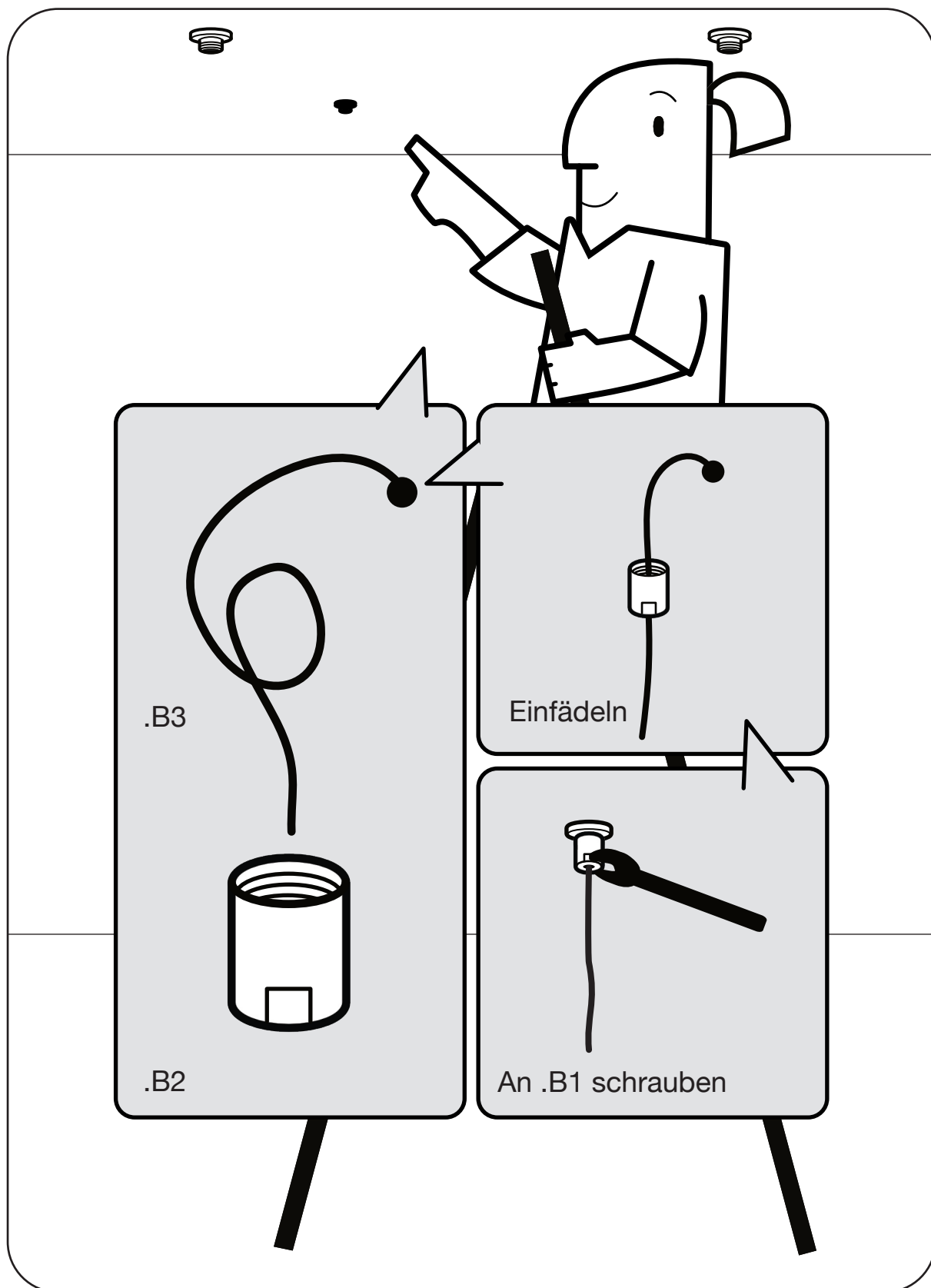


Vermessungslaser (.W3) mit Vlies (.A2) am Boden

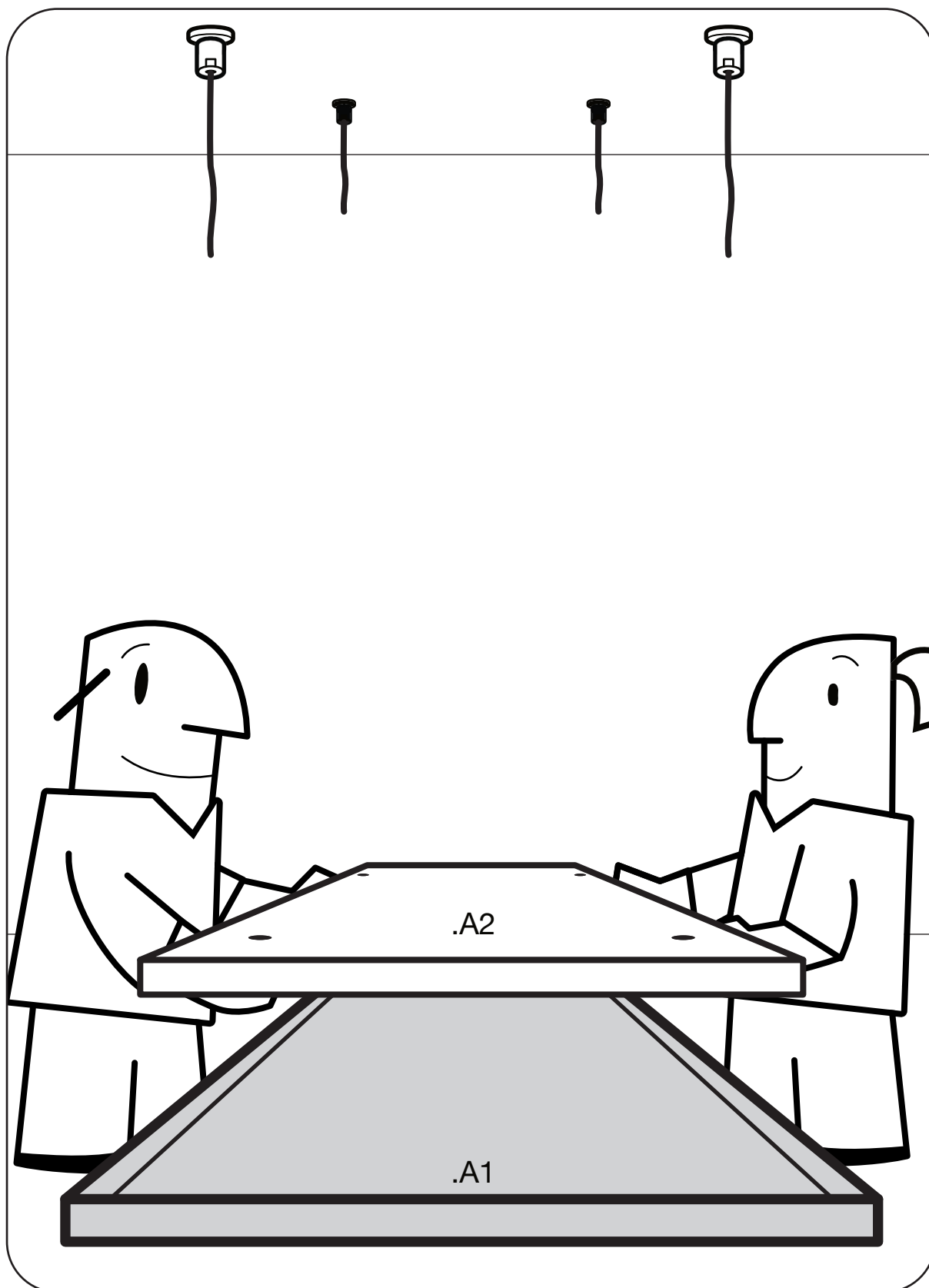
Deckenbefestigungen montieren



Seile befestigen

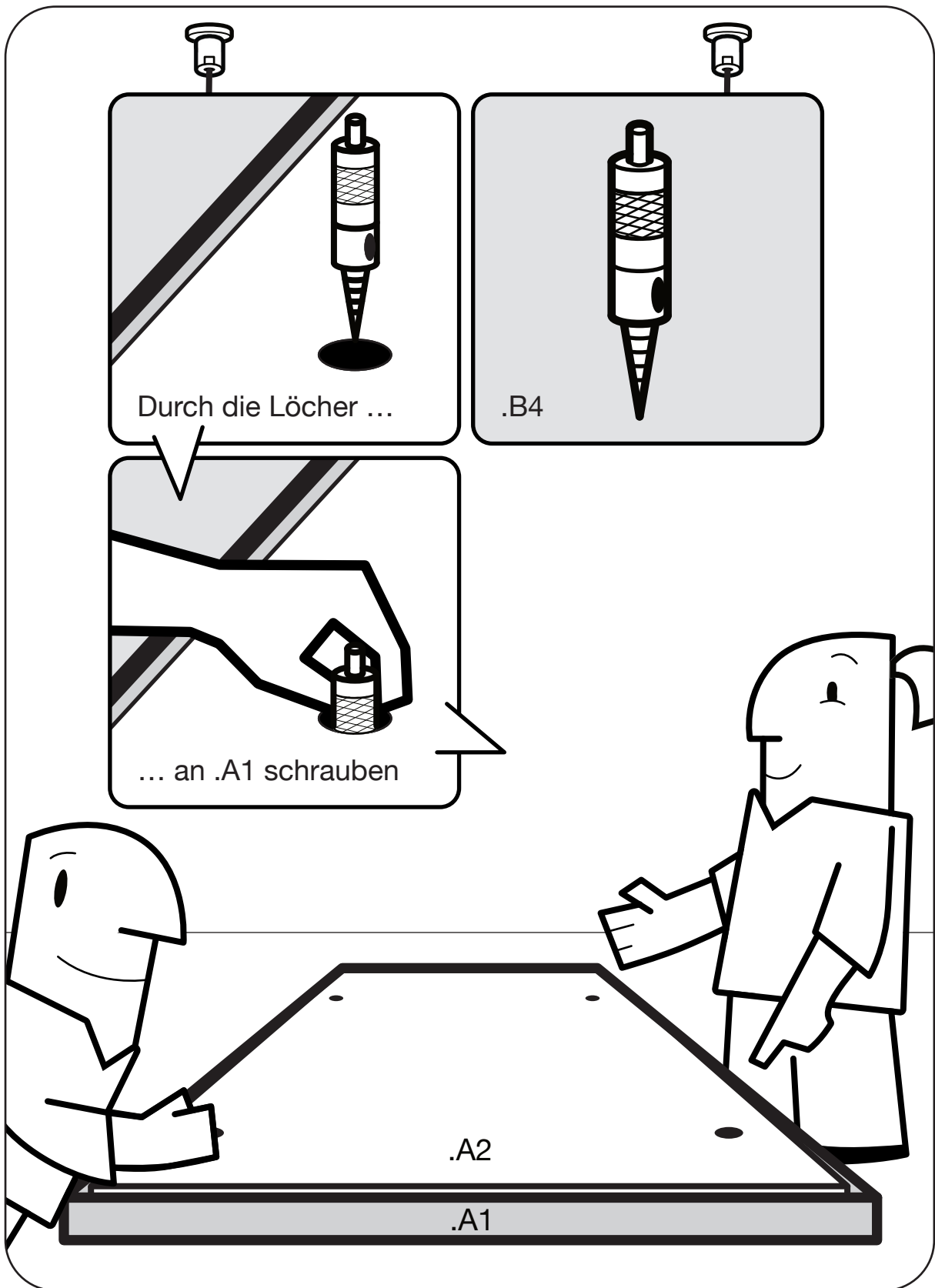


Deckenabsorber zusammenbauen

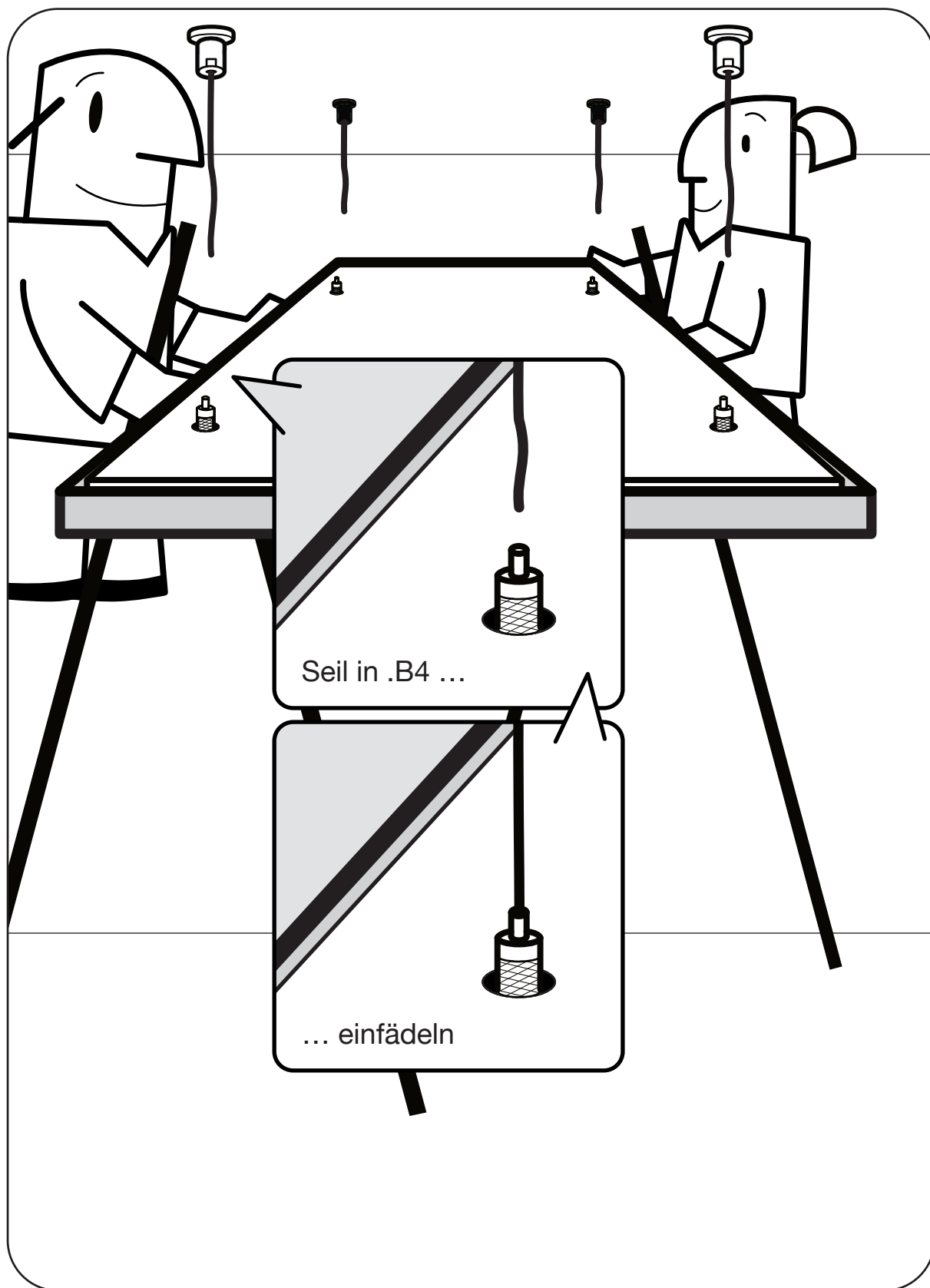


Vlies (.A2) in Filzbox (.A1) legen

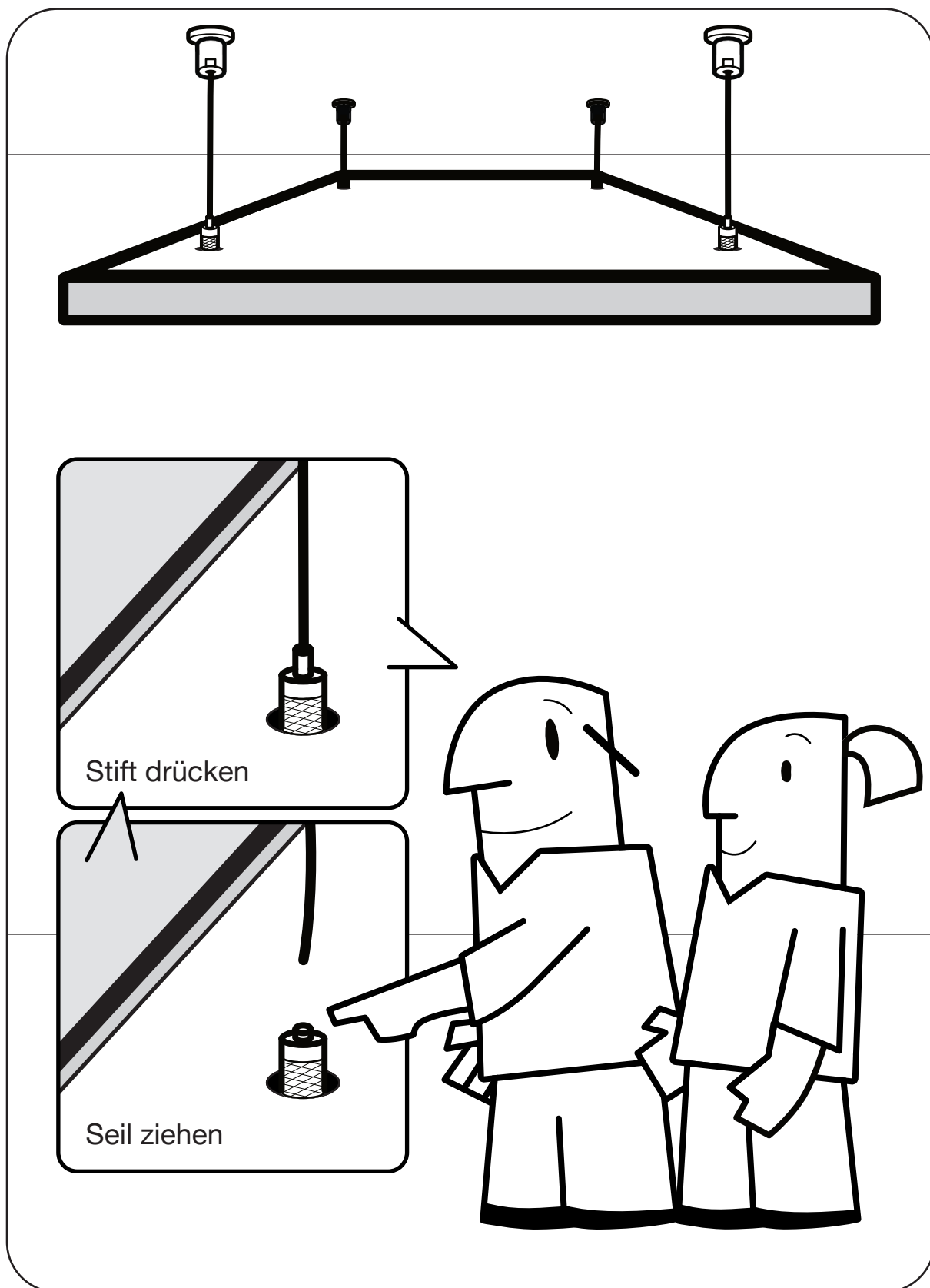
Seilhalter anschrauben



Deckenabsorber aufhängen



Länge korrigieren



Notizen



M&K FILZE GMBH

Gewerbepark Hügelmühle 4
91174 Spalt
Germany

Tel.: +49 9175 90778-0
Fax: +49 9175 90778-50

info@filzfabrik.de
www.filzfabrik.de

AKUSTISCHE FILZE

Tel.: +49 (0) 9175 90778-52
Mobil: +49 151 407 543 67
borowski@filzfabrik.de



**DIE MONTAGE
ALS
VIDEO-ANLEITUNG**